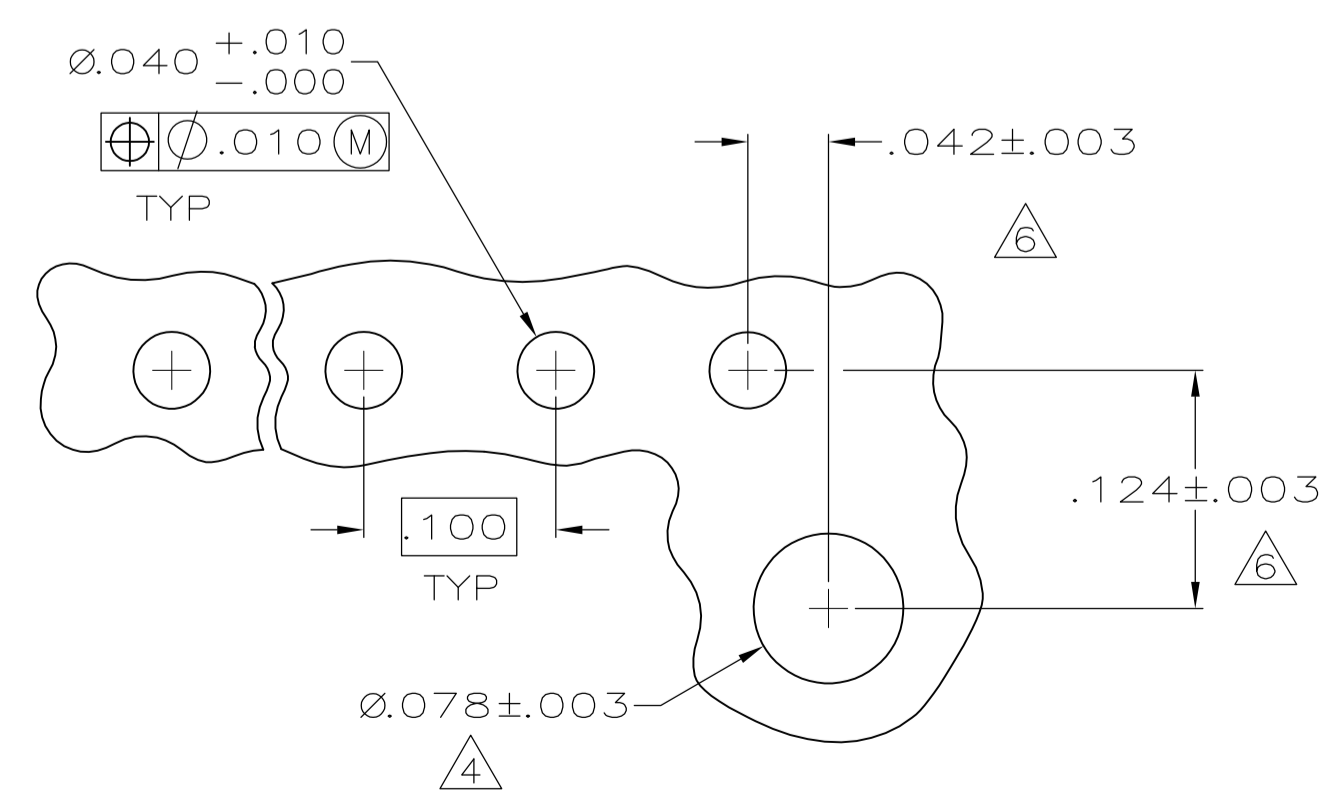
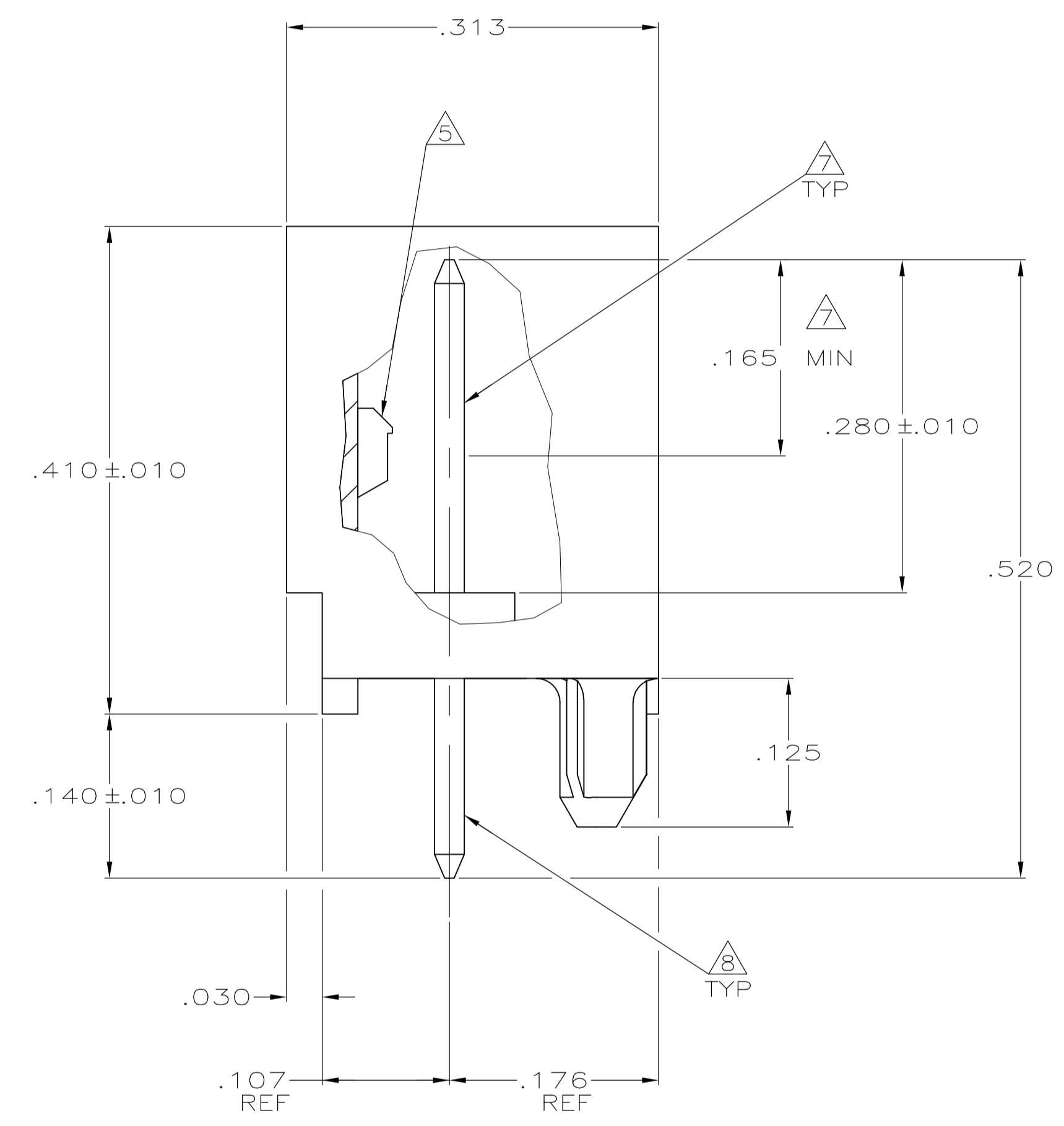
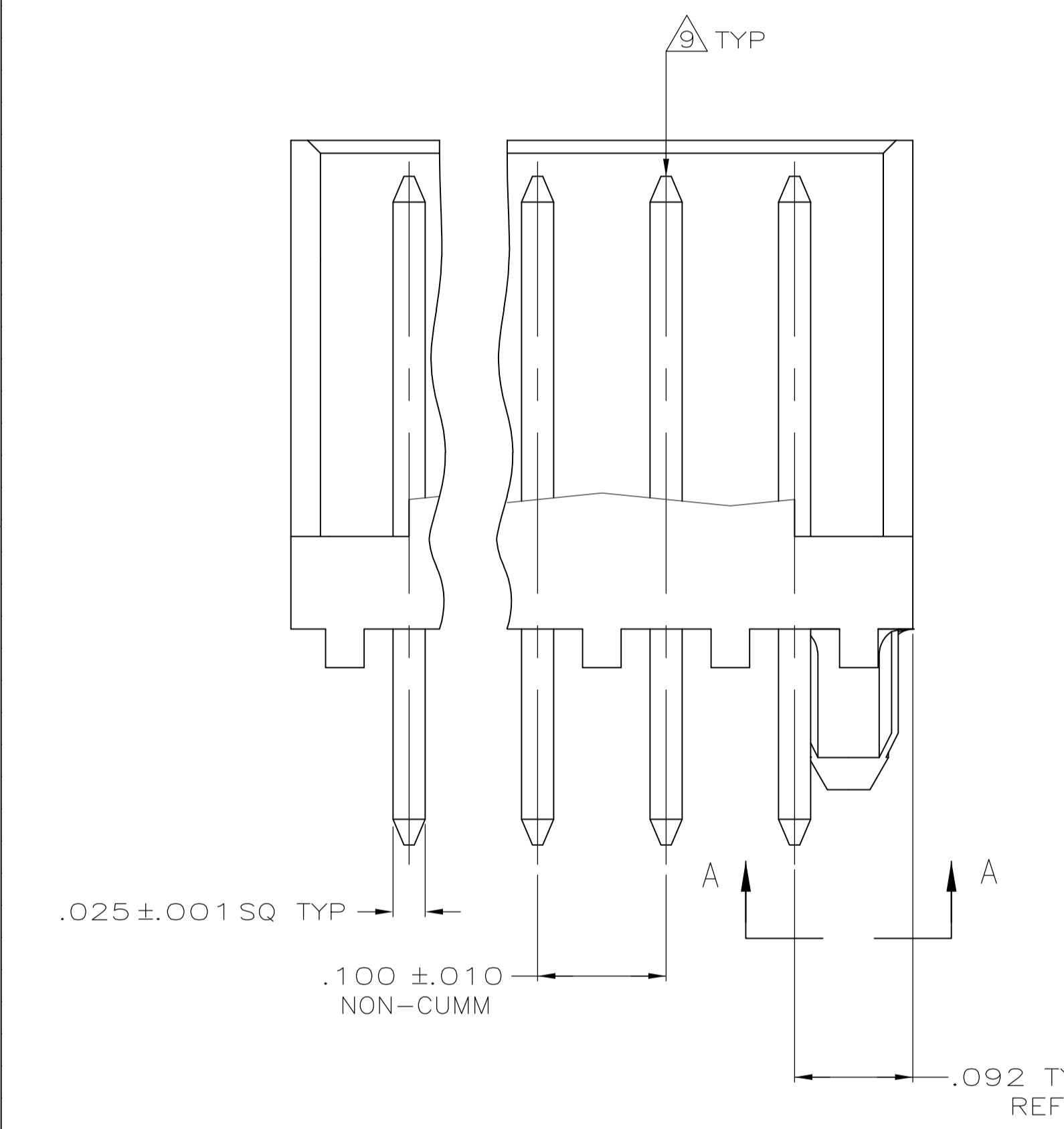


- 1 MATERIAL: HEADER - POLYESTER UL94V-0 (BLACK)
POST - COPPER ALLOY.
- 2 SOLDER SIDE OF P.C. BOARD SHOWN.
- 3 PARTS COMPLY WITH AMP SOLDERABILITY SPEC 109-11-2.
- 4 THE RETENTION TABS PROVIDE A ONE-TIME INTERFERENCE FIT IN THE .078 DIAMETER BOARD HOLE FOR HEADER ASSEMBLY RETENTION DURING SOLDERING.
- 5 LATCH DETENT FEATURE OCCURS 2 PLACES ON EACH END (MAXIMUM OF FOUR PER PART). FOR 2 THRU 5 CIRCUIT HEADERS, LATCH FEATURE OCCURS BETWEEN EACH CIRCUIT.
- 6 COORDINATE DIMENSION APPLIES FROM CENTER OF ACTUAL FEATURE.
- 7 GOLD PLATE, .000030 MIN, FOUR SIDES AS SHOWN, OVER NICKEL UNDERPLATE, .000050 MIN, ALL SIDES AND ENTIRE LENGTH OF POST.
- 8 TIN-LEAD (93/7) PLATE, ALL FOUR SIDES, .140 REF.
- 9 POST MUST WITHSTAND 3.0 LBS (13.34 NEWTONS) MIN FORCE WITHOUT DISLODGING, EITHER DIRECTION.
- 10 SLOTS MAY OR MAY NOT APPEAR ON THESE PARTS.
- 11 MATTE TIN 100% PLATE, ALL FOUR SIDES, .140 REF.



RECOMMENDED MOUNTING HOLE PATTERN FOR .063 THK PRINTED CIRCUIT BOARD

.025	0.64	.124	3.15	-	-
.010	0.25	.107	2.72	-	-
.005	0.13	.100	2.54	.520	13.21
.003	0.08	.092	2.34	.410	10.41
.001	0.03	.078	1.98	.313	7.95
.000350	0.00889	.063	1.60	.280	7.11
.000150	0.00381	.062	1.57	.176	4.47
.000050	0.00127	.042	1.07	.165	4.19
.000030	0.00076	.040	1.02	.140	3.56
.000	0.00	.030	0.76	.125	3.18
IN	MM	IN	MM	IN	MM

CONVERSION TABLE

METRIC

11	1.484	37.69	14	4-644897-4
	1.384	35.15	13	4-644897-3
	1.284	32.61	12	4-644897-2
	1.184	30.07	11	4-644897-1
	1.084	27.53	10	4-644897-0
	.984	24.99	9	3-644897-9
	.884	22.45	8	3-644897-8
	.784	19.91	7	3-644897-7
	.684	17.37	6	3-644897-6
	.584	14.83	5	3-644897-5
	.484	12.29	4	3-644897-4
	.384	9.75	3	3-644897-3
	.284	7.21	2	3-644897-2
	1.484	37.69	14	1-644897-4
	1.384	35.15	13	1-644897-3
	1.284	32.61	12	1-644897-2
	1.184	30.07	11	1-644897-1
	1.084	27.53	10	1-644897-0
	.984	24.99	9	644897-9
	.884	22.45	8	644897-8
	.784	19.91	7	644897-7
	.684	17.37	6	644897-6
	.584	14.83	5	644897-5
	.484	12.29	4	644897-4
	.384	9.75	3	644897-3
	.284	7.21	2	644897-2
	IN	MM	NO OF POSITIONS	PART NUMBER
	L			HEADER ASSEMBLY

THIS DRAWING IS A CONTROLLED DOCUMENT.

DIMENSIONS:	TOLERANCES UNLESS OTHERWISE SPECIFIED:	DIN K. WHITAKER 27JUNE2005	APPROVED D. ROSSI 27JUNE2005	NAME	Tyco Electronics Corporation
INCHES:	0 PLC ± -	1 PLC ± -	2 PLC ± -	3 PLC ± .005	4 PLC ± -
ANGLES:	± -	± -	± -	± -	± -
MATERIAL	FINISH	WEIGHT	SIZE	CAGE CODE	DRAWING NO
1	1 2 3 4	-	A1	00779	644897
CUSTOMER DRAWING			SCALE	SHEET	REV
			10:1	1 OF 1	D